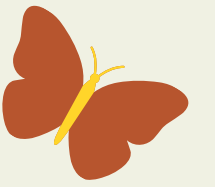




Friends of Duigan St Park & Playground



COMMUNITY CONSULTATION

PROJECT: BULB CORNER



PROJECT GOALS

Create new feature
garden bed

Multi-season planting

Boost community spirit!

Budget-Friendly Blooms

Increase biodiversity



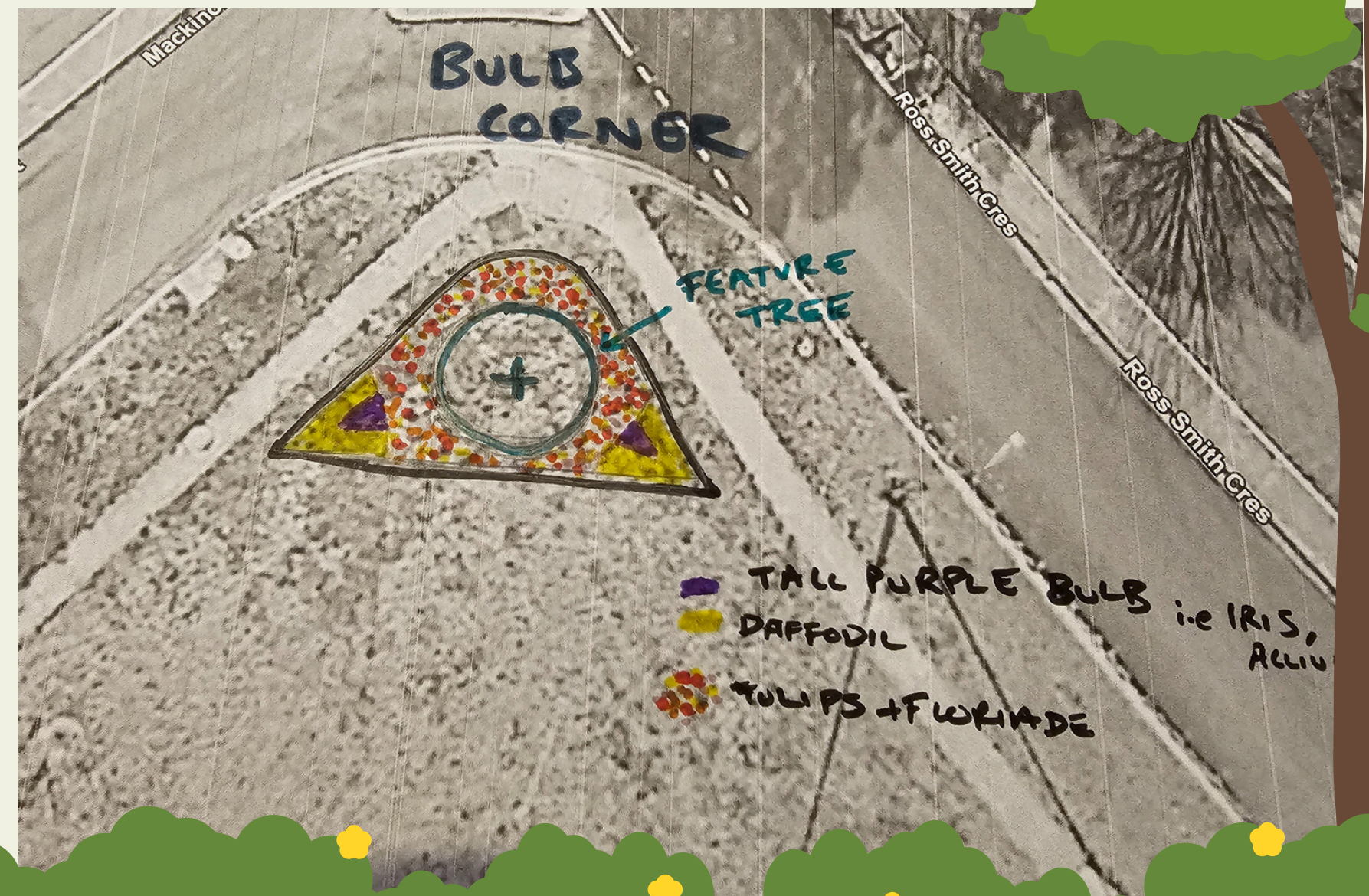
GARDEN DESIGN

The garden bed will be designed to be viewed from both sides of Mackinoly St and Ross Smith Crescent.

This corner of the park is North facing and receives full sun. There are two footpaths that allow the community to walk past and enjoy the floral display.

The design features:

1. A native feature tree to provide shade to the garden bed, reducing watering requirements. Potential to thematically decorate this during cultural holidays as a focal point.
2. Two corners that house a bright yellow and purple theme.
3. A large underplanting zone for tulips and perennials that provide cheery colour to the park.



PROPOSED TREES



Tristaniaopsis laurina 'Luscious' – Water Gum
Hardy evergreen, low-maintenance tree with beautiful glossy foliage, fragrant flowers, and a neat, upright growth habit.

Variety Type
Native

Growth Rate
Slow to moderate

Height
9m





PROPOSE PLANTS

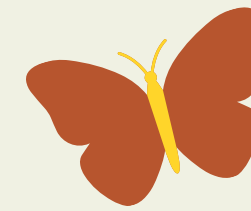
Bulbs (Spring/Autumn)

- Tulip bulbs (preferably sourced from Floriade events)
- Tall Iris or Allium Bulb to give height (Purple)
- Daffodils (Yellow)

Perennials (Summer)

- Aster varieties spotted with Zinnia
- Salvia nemorosa 'Caradonna' (Purple)
- Yellow chrysanthemums (Yellow)

BOOSTING BIODIVERSITY



This selection ensures a continuous food source for pollinators like bees, butterflies, and hoverflies from early spring through autumn, addressing the critical late-season needs of insects when other plants fade.

The Water Gum provides year-round habitat and shelter for birds, while the varied flower shapes and colours attract a broader range of pollinators.

This thoughtful combination of native structural elements and pollinator-friendly non-natives not only creates a vibrant, ever-flowering display for the community but also significantly enhances the ecological value of the park.



THANK YOU

